



U.S. ARMY

Redstone Update

LTG Chris Mohan

Army Materiel Command Deputy Commanding General
Redstone Arsenal Senior Commander

UNITED STATES ARMY

REDSTONE

ARSENAL







THANK YOU!



FEDERAL CENTER OF EXCELLENCE

LOGISTICS SERVICES



Army Materiel Command



Army Aviation & Missile Command

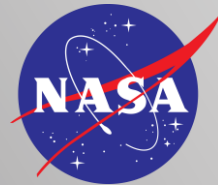


Army Security Assistance Command



Army Contracting Command

SPACE OPERATIONS & MISSILE DEFENSE



NASA



Army Space & Missile Defense Command



Missile Defense Agency

RESEARCH, DEVELOPMENT, TEST & EVALUATION



Army Futures Command



Combat Capabilities Development Command Aviation & Missile Center

Cross Functional Teams @ Redstone

-Future Vertical Lift

-Assured Positioning, Navigation and Timing/Space - APNT/Space

-Contested Logistics Capabilities



Redstone Test Center



Program Executive Office Aviation



Program Executive Office Missiles & Space

INTELLIGENCE & HOMELAND DEFENSE



Federal Bureau of Investigation



Alcohol, Tobacco & Firearms



Missile & Space Intelligence Center, Defense Intelligence Agency



Defense Intelligence Agency



DAU



By the Numbers

U.S. ARMY

REDSTONE ARSENAL is Home to one of the four 4-star Army Commands- Army Materiel Command

- ~ 65 Tenant Units
- 38,162 Acres of Land
- 14,700 Developable Acres
- 2,603 Prime Developable Acres
- 19+ Million Square Feet of Building Space
- 7,200 Foot Runway
- 200+ Miles of Road
- 10 Miles of Riverfront

Redstone Arsenal Workforce Breakdown

~ 45,700*

- Active Military: ~740
- Reserve Military: 130
- Civilians: 29,500
- Contractors: 15,350

*Includes DOD, DOJ & MSFC



FBI- Redstone

- Unofficial “Second Headquarters”
 - Provides resiliencies/redundancies
- Now two campuses on installation
- Plans for Academic Zone
 - Initial training at Quantico/Advanced training at Redstone
 - Practical Problem Venue
 - Student Dorms





U.S. ARMY

Redstone's Newest Tenants



Contested Logistics Cross-Functional Team

- **Formed in 2023 to address the need to sustain forces and equipment quickly on future battlefields**
 - Condition of the joint environment in which an adversary directly targets logistics operations, facilities, and activities and supply chains are degraded or destroyed

- **Transforming the Army through four initial portfolios:**
 - **Precision Sustainment:** utilizing AI and machine learning
 - **Demand Reduction:** meeting requirements at point-of-need
 - **Multi-Capable Distribution Platforms:** autonomous resupply
 - **Advanced Power:** reducing consumable demands

- **Human Machine Integration:**
 - The perfect balance of robotics, AI/autonomy, and the human touch – commanded by humans, controlled by AI
 - Extend Commanders' operational speed, reach, and endurance
 - Reduce risk, physical demand, and cognitive demand to Soldiers



U.S. ARMY

Redstone's Newest Tenants



SDA
SPACE DEVELOPMENT AGENCY

Space Development Agency

➤ **Constructive disruptor for space acquisition**

- Direct reporting unit for Space Force
- Values speed and lowers costs
- Works in two-year tranches
- Better to find a good solution now, than perfect solution too late

➤ **Two state-of-the-art space operations centers**

- Redstone Arsenal, with 20 personnel (4 Army officers)
- Grand Forks Air Force Base, North Dakota

➤ **Redstone's SDA building on Patriot Drive**

- Building out operations center in existing building
- Operational in Summer 2024
- About 70 will be assigned



U.S. ARMY

Redstone Arsenal & DOD Economic Impact

\$30.8B

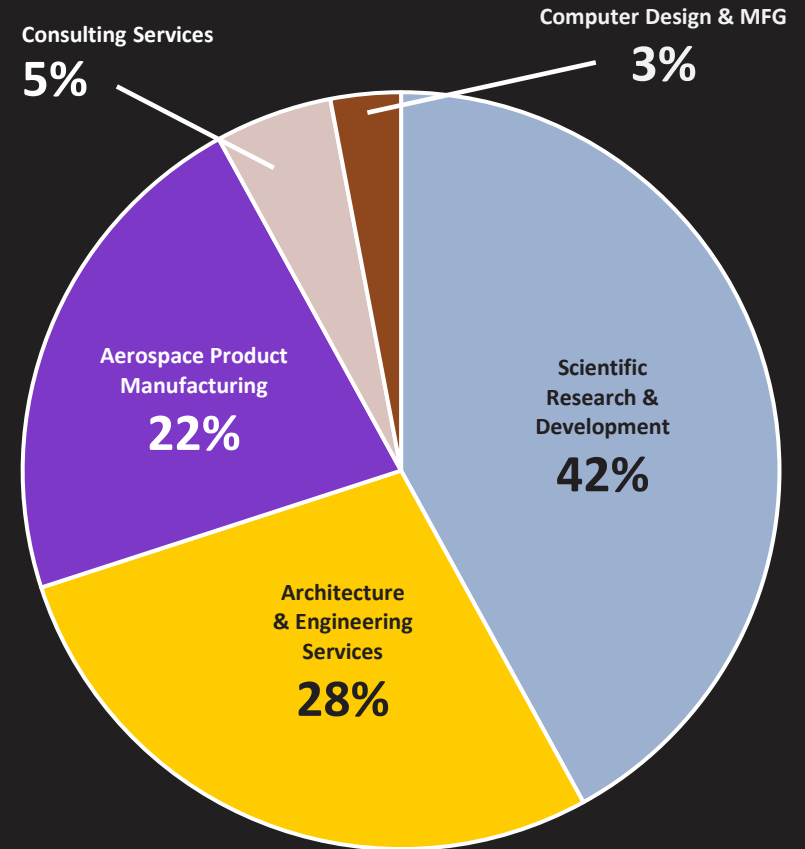
Annual Economic Impact on **Alabama**



Total DOD military, government and contractor positions in the region: **92,779**

Employment impact:
143,156 Total jobs across the Tennessee Valley

Top Industries by DOD Contracts



Redstone Arsenal accounts for **58%** of the Gross Regional Product for the **Tennessee Valley**

Redstone – Global Support

U.S. ARMY



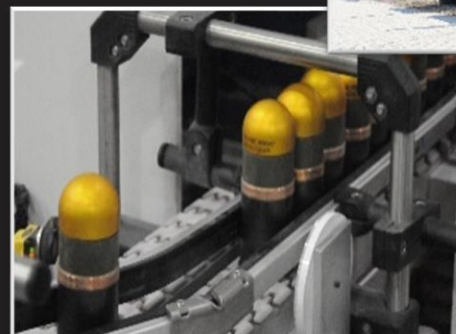




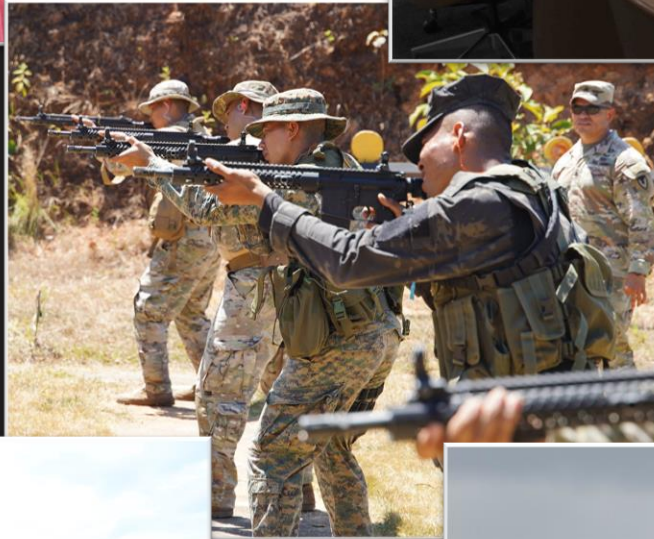
Support to Ukraine Operations

U.S. ARMY

- AMC has shipped more than \$13.4B in equipment and supplies including more than 25,000 major end items such as:
 - Armored Vehicles
 - Rocket Systems
 - Artillery
 - Radar Systems
 - 182 million rounds of ammunition









Acquisition Support



Explosive Ordnance



Logistics



Storage



Ongoing RS/UKR and ISR/Hamas
Crisis Support



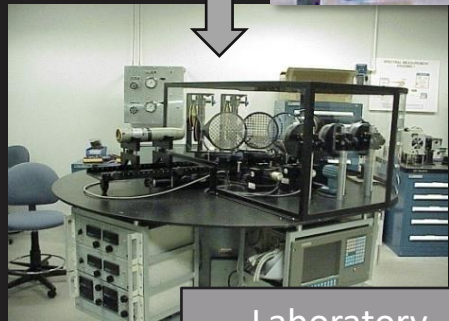
Exploitation &
Analysis



Foundational Intelligence to Counter
Foreign Threat Weapons



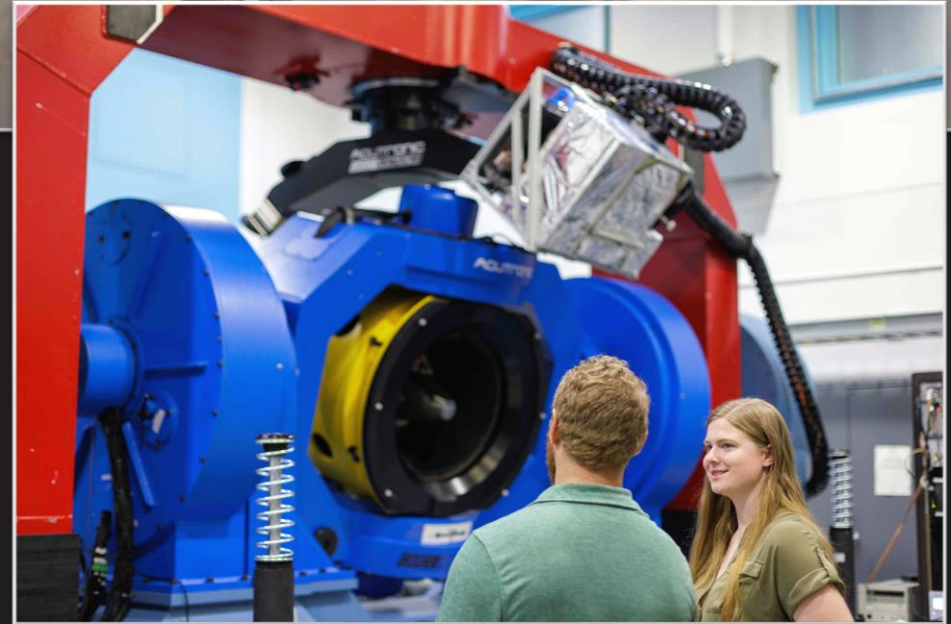
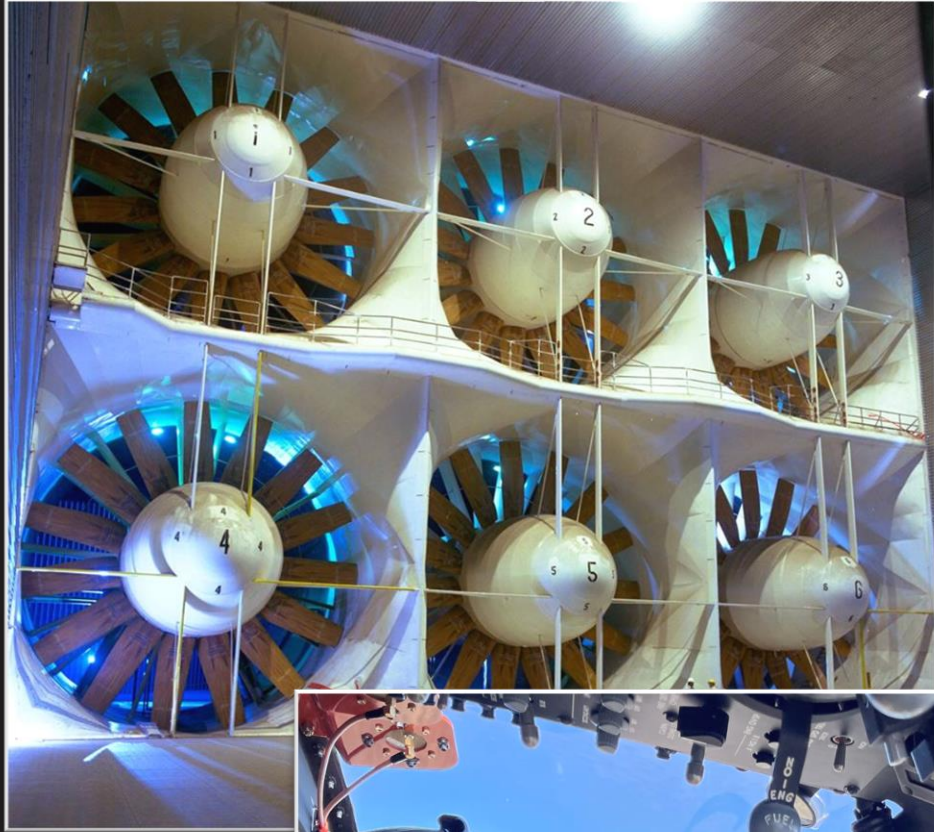
Range Testing



Laboratory
Testing











THANK YOU!

Enhanced use Lease

U.S. ARMY

- 470-acre site
- 75-year lease, area will revert to Army
- Most economical use of federal property
 - Currently earns Redstone ~ \$350-400K per year
- Secure parcel located behind the gate
 - Army Corps of Engineers building
 - 205,000 square foot building
 - (Expected completion date January 2024)

COMING SOON!

- Huntsville Hospital Physicians Clinic



NORTHROP GRUMMAN  



 **BOEING**



Resolute Way

U.S. ARMY

- Construction scheduled to begin 2026
- Alleviate traffic, safety issues associated with existing interchange
- Providing improved access to Redstone Arsenal and Gateway

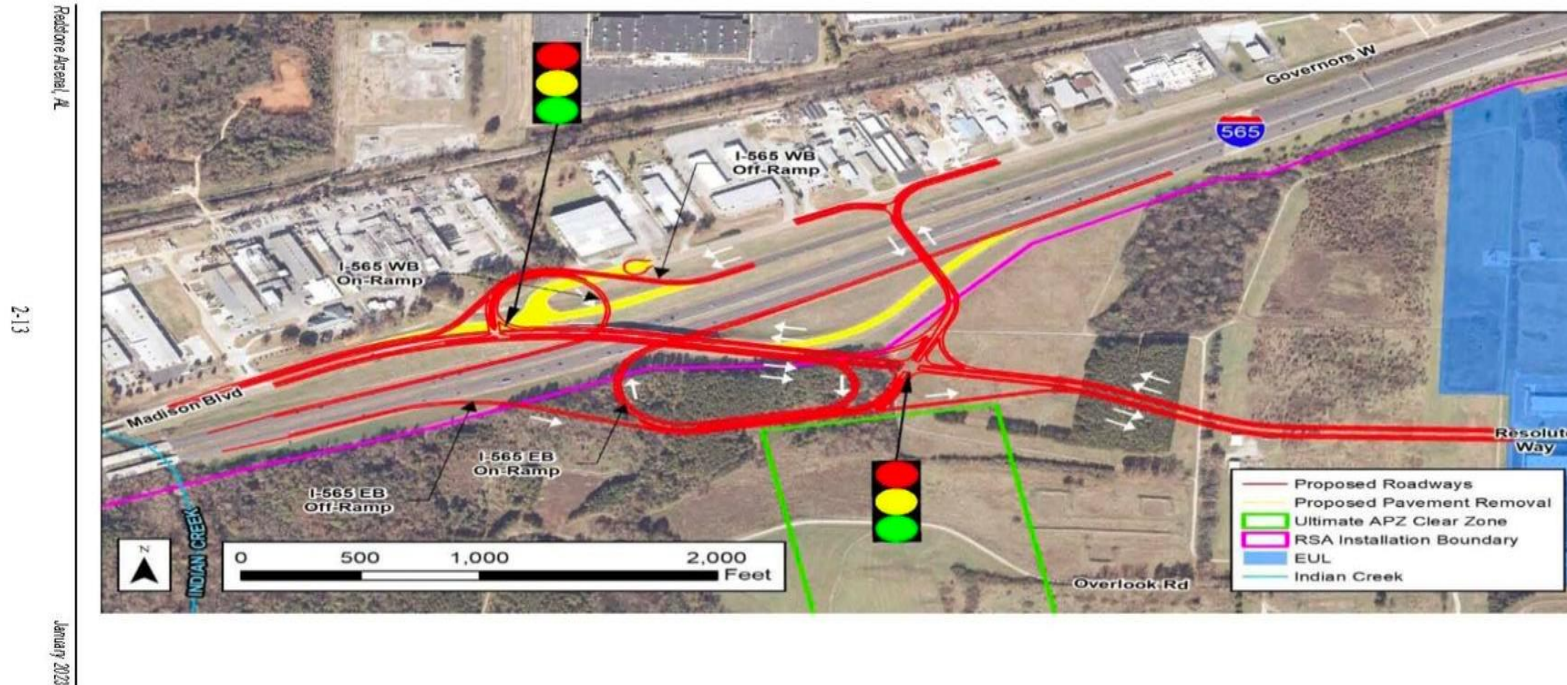


Figure 3. Traffic Directions and Proposed Signals for the Proposed Action

Environmental Assessment for the Interchange Modification at Exit 7 on Interstate 565



THANK YOU!